

RELACÃO DO MÇO							
V0	V1	V2	V3	V4	V5	V6	
V7	V8	V9	V10	V11	V12	V13	
ANO	N	Q1	Q2	Q3	Q4	Q5	Q6
CAB	CAB1	1	2	3	4	5	6
		2	3	4	5	6	7
		3	4	5	6	7	8
		4	5	6	7	8	9
		5	6	7	8	9	10
		6	7	8	9	10	11
		7	8	9	10	11	12
		8	9	10	11	12	13
		9	10	11	12	13	14
		10	11	12	13	14	15
		11	12	13	14	15	16
		12	13	14	15	16	17
		13	14	15	16	17	18
		14	15	16	17	18	19
		15	16	17	18	19	20
		16	17	18	19	20	21
		17	18	19	20	21	22
		18	19	20	21	22	23
		19	20	21	22	23	24
		20	21	22	23	24	25
		21	22	23	24	25	26
		22	23	24	25	26	27
		23	24	25	26	27	28
		24	25	26	27	28	29
		25	26	27	28	29	30
		26	27	28	29	30	31
		27	28	29	30	31	32
		28	29	30	31	32	33
		29	30	31	32	33	34
		30	31	32	33	34	35
		31	32	33	34	35	36
		32	33	34	35	36	37
		33	34	35	36	37	38
		34	35	36	37	38	39
		35	36	37	38	39	40
		36	37	38	39	40	41
		37	38	39	40	41	42
		38	39	40	41	42	43
		39	40	41	42	43	44
		40	41	42	43	44	45
		41	42	43	44	45	46
		42	43	44	45	46	47
		43	44	45	46	47	48
		44	45	46	47	48	49
		45	46	47	48	49	50
		46	47	48	49	50	51
		47	48	49	50	51	52
		48	49	50	51	52	53
		49	50	51	52	53	54
		50	51	52	53	54	55
		51	52	53	54	55	56
		52	53	54	55	56	57
		53	54	55	56	57	58
		54	55	56	57	58	59
		55	56	57	58	59	60
		56	57	58	59	60	61
		57	58	59	60	61	62
		58	59	60	61	62	63
		59	60	61	62	63	64
		60	61	62	63	64	65

[illegible]

RELACÃO DO QCD

SERÇÃO A.A.
EBC 1.68

VS

ADQ	N	DIAM	QUANT	C (MPa)	C TOTAL
CAIS	1	4.0	1	1184	1184
CAIS	2	4.0	2	1184	2368
CAIS	3	4.0	2	1184	2368
CAIS	4	4.0	2	618	1236
CAIS	5	4.0	2	1184	2368
CAIS	6	4.0	14	1200	16800
CAIS	7	5.0	2	1184	2368
CAIS	8	5.0	2	112	224

RESUMO DO QCD

QCD	DIAM	C TOTAL	PSQO + 5%
CAIS	4.0	404.4	19.3
CAIS	5.0	205.1	19.7
PSQO TOTAL			
PSQ			179.3
CAIS	4.0	404.4	19.3

Volume de concreto: $(Q \cdot X) = 4.48 \text{ m}^3$
 Área média = 0.35 m^2

83

FEILHAÇÃO DO AÇO

AÇO	Nº	DMM (mm)	QUANT.	C. UNIT (mm)	C. TOTAL (mm)
CHSB	1	8,3	502	77	38604
CHSB	2	8,3	3	306	1818
	3	8,3	14	349	12326
	4	8,3	10	304	9040
	5	8,3	2	1308	2796
	6	8,3	1	1308	1308
	7	8,3	2	1308	2684

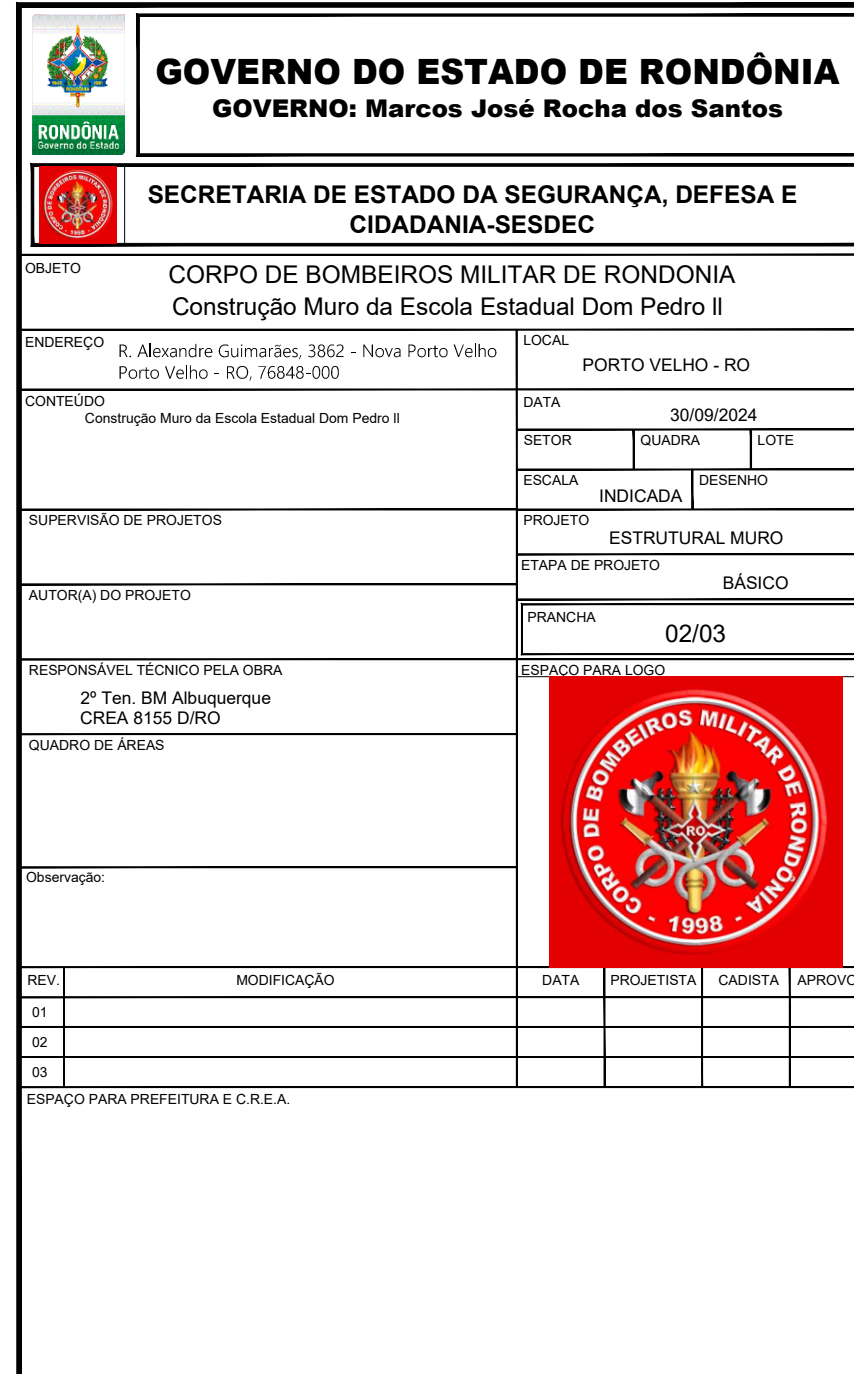
RESUMO DO AÇO

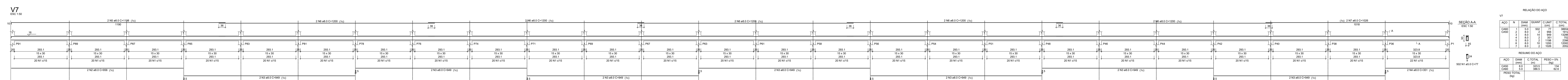
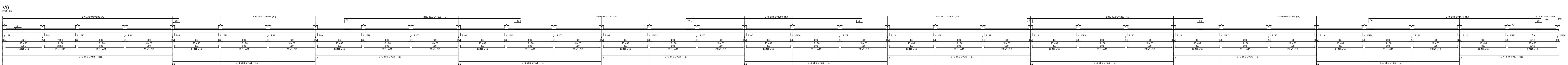
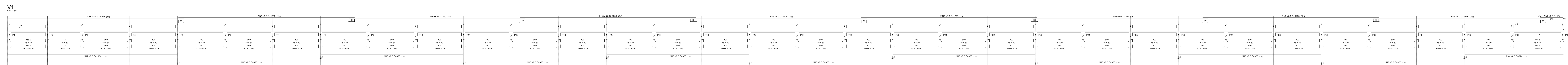
AÇO	DMM (mm)	% TOTAL (mm)	PESO + % (kg)
CHSB	8,3	332,6	134,4
			62,4

PESO TOTAL
(kg)

CHSB	134,2
CHSB	62,4

Total de concreto [C] = 3,31 m³



[illegible]